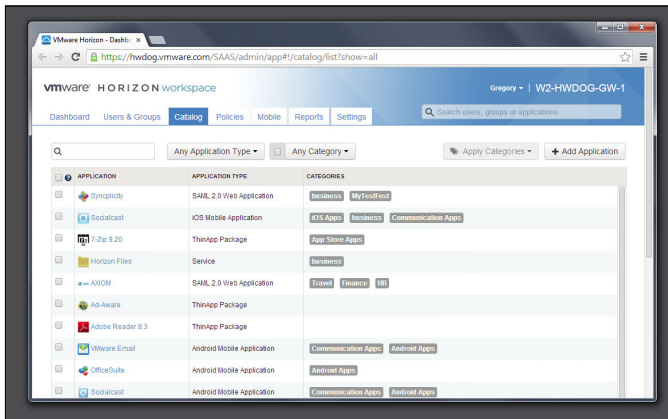


VMware Workspace

AT A GLANCE

VMware® Workspace™ provides an easy way to access applications on any device, while enabling IT to centrally deliver, manage and secure these assets. For the end-user, the result is true mobility: anytime, anywhere access to everything they need to work productively. For IT, the result is greater control over corporate assets across devices.



A New Strategy for Enabling Mobility

Today's employees work from anywhere, using a variety of devices that provide ubiquitous Internet access. This workforce is more productive, efficient and collaborative. Today's organizations must develop a strategy to support and secure these new work patterns.

How Does Workspace Work?

VMware Workspace gives end-users easy access to all their business apps including SaaS apps, packaged ThinApps and even virtualized apps from Citrix on any device. Moreover, it gives IT a scalable, policy-based management platform to centrally govern and secure these assets across devices.

A Single Workspace for Apps and Desktops

VMware Workspace makes it easy for users to access applications by creating a corporate workspace that contains all of their applications and desktops. Workers can access the workspace from any device and get the right applications and content for that device.

Context-Based User and Device Management

IT must secure and support a variety of applications, devices and operating systems. Workspace gives IT a user-centric management platform where all apps services are centrally cataloged and then distributed to users based on their identity and needs. The built-in policy engine enables IT to quickly and easily provision, distribute and update applications on any device, while ensuring the proper security settings and restrictions are applied to each end user. This approach streamlines management and protects existing investments by allowing organizations to accommodate new applications, devices and operating systems without the need for new infrastructure.

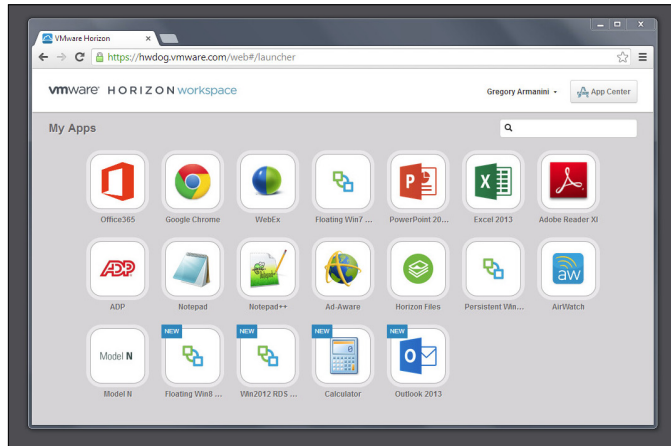
Key Features

Access Applications from Anywhere

- Access SaaS, VMware ThinApp® and Citrix XenApp® applications using a single workspace with a single password. Request access to additional SaaS, mobile, ThinApp and Citrix XenApp applications through an application "store."
- Synchronize activity from desktop (Windows and Mac) to every device and back for anytime, anywhere access to corporate files

Deliver a Secure Mobile Workspace

- Leverage customized branding – company logo and name, product name, user portal shortcut icon and text.



Centralize Application Management

- Quickly and easily provision, distribute and update applications and enterprise services through the dedicated workspace.
- Categorize, publish, version and distribute apps into an application catalog, including native, web, published and referred applications from public stores
- Manage application entitlements
- Pre-configure application preferences before distributing to employees

Employ Policy-based Management

- Establish governance and security with a single policy engine that spans disparate systems for applications, and devices
- Dynamically update policies
- Visualize policy scenarios (define policy sets, define the order of precedence, and understand user- and group-associations).

Meet Compliance Requirements

- More than 100 auditable events and hundreds of different reports, including quota use, document access, external logins, application use, and devices under management.
- Log events for auditing and document retention by policy, on a user, group or global basis

Find Out More

For more information, visit the Workspace Web page at <http://www.vmware.com/products/horizon-workspace>

How Can I Purchase VMware Workspace?

For information on how to purchase VMware products, call 1-877-4VMWARE (outside of North America, +1-650-427-5000), visit <http://www.vmware.com/products> or search online for an authorized reseller. For detailed product specifications and systems requirements, refer to the Workspace installation and configuration guide.

